

# MIRROR LAKE ELEMENTARY NEWSLETTER

WE ARE AN  
"A" DISTRICT

JANUARY  
EDITION

ISSUE 6

MAGNET SCHOOL-HOME OF THE DOLPHINS- TITLE I SCHOOL

DECEMBER  
HIGHLIGHTS

GINGERBREAD  
MAN



Our mini magnet showcase with first graders. Such a special event!

WINTER  
HOLIDAY SHOW



MLE ELVES



MOTHER &  
SON DANCE



SCHOOL  
LEADERS

MRS. MARLEN VELIZ, PRINCIPAL  
MS. HEND HAFEZ, ASSISTANT PRINCIPAL  
(754)322-7100  
[BROWARDSCHOOLS.COM/MIRRORLAKE](http://BROWARDSCHOOLS.COM/MIRRORLAKE)





# SCHOOL EXPECTATIONS

## Arrival Procedures:

Students should not arrive to school before 7:30 AM. Doing so poses a safety risk, as there is no supervision prior to 7:30 AM. Breakfast is served beginning at 7:30 AM and students eating breakfast must be in line by 7:45 AM, unless they are on a late bus. All students are expected to be in their grade level hallway until the first bell at 7:50 AM. While sitting in the hallway, all students are expected to have a book for reading. Once in their grade level hallway, students will not be allowed to leave the hallway for any reason. Students are expected to be in their classroom, ready to learn by 7:50 AM.

Parents report with their child(ern) to the office if they arrive to school after 8:00am.

## Dismissal Procedures:

We dismiss at 2:00 PM for all students. Parents wishing to sign their student out early must do so before 1:30 PM (according to Board Policy 5.5) unless it is an emergency (administrative approval will be required).

## FRONT OFFICE PROCEDURES

The front office remains locked at all times. Please ring the doorbell on the right side of the door and have your government issued ID readily available to hold up to the camera on the top of the doorbell. Please wait patiently to be buzzed into the office. If you are visiting the campus, you will be checked in with your ID through our Raptor System and issued a visitor's pass to wear. Thank you for your patience and cooperation.

**OFFICE HOURS:** 7:30 A.M.- 3:00 P.M.

**STUDENT HOURS:** 8:00 A.M.-2:00 P.M.

**BREAKFAST:** 7:30 A.M.- 7:55 A.M.

**EARLY RELEASE:** 12:00 NOON

**LATEST EARLY DISMISSAL:** 1:30 P.M.

## STAY CONNECTED

### STAY CONNECTED

#### MLE Twitter:

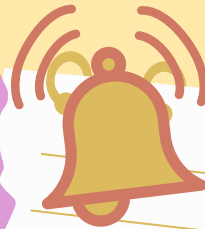
<https://twitter.com/LEMagnetSchool>

#### MLE Instagram:

<https://www.instagram.com/mirrorlakemagnet/>

#### MLE Facebook :

<https://www.facebook.com/profile.php?id=100092276006694&mibextid=LQQJ4d>



## Upcoming Events

- 1/10/24 - Employee Planning - No Students
- 1/14/25 BCPS Showcase @Amerant Arena  
@ 5:00 PM - 8:00 PM
- 1/15/25 Pancakes & Pajamas Movie Night  
@ 5:30 PM
- 1/17/25 SAC Meeting; 7:15 am